

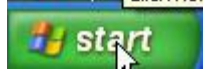
Optimizing Virtual Memory Windows XP

Virtual memory is used to extend the physical memory in your computer. Virtual memory helps your computer to store memory more efficiently.

This tutorial will show you step by step how to optimize your virtual memory settings for Windows XP.

The first step is to find out how much physical memory your computer has.

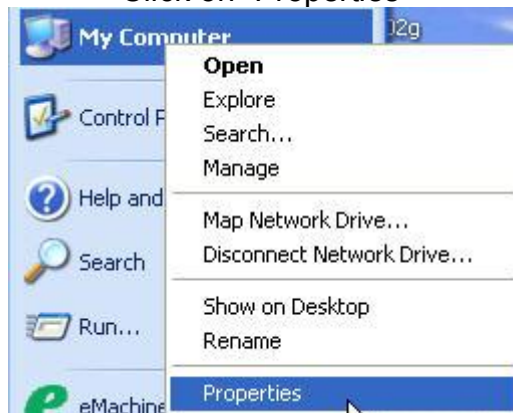
Click on the “Start” button.



Right-click on “My Computer”



Click on “Properties”

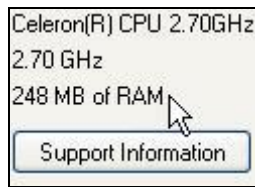


Optimizing Virtual Memory Windows XP

This window will appear.



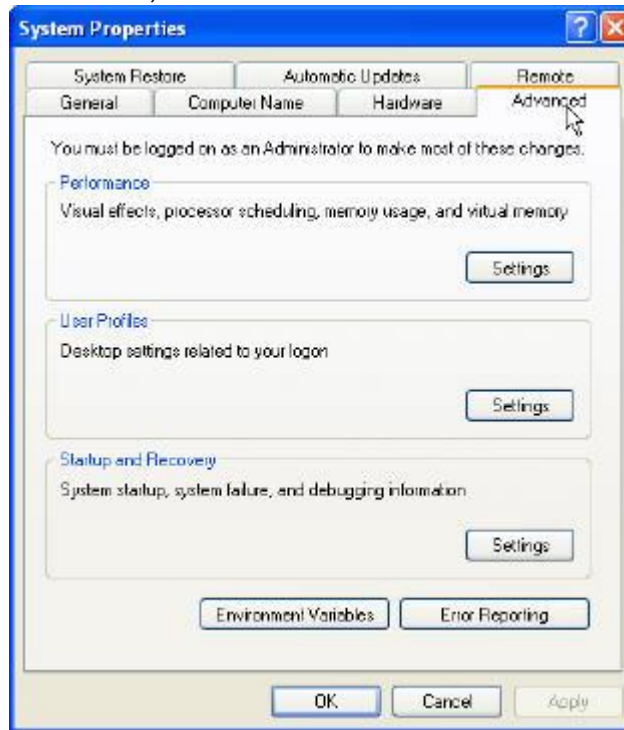
The amount of physical memory on your computer is located close to the bottom of the window.



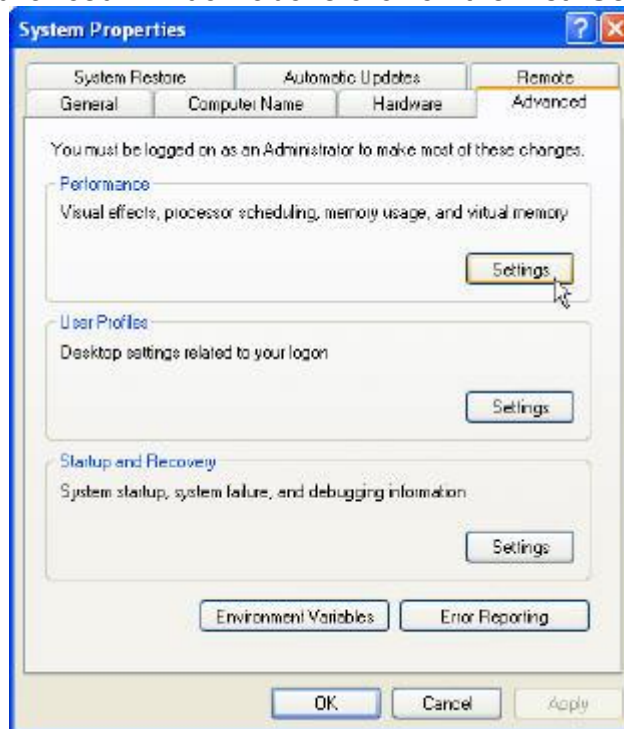
The above picture shows that my computer has "248 MB of RAM". This is the amount of physical memory your computer has. Write down the amount on your computer.

Optimizing Virtual Memory Windows XP

Now, click on the “Advanced” tab.



From the “Advanced” window above click on the first “Settings” button.

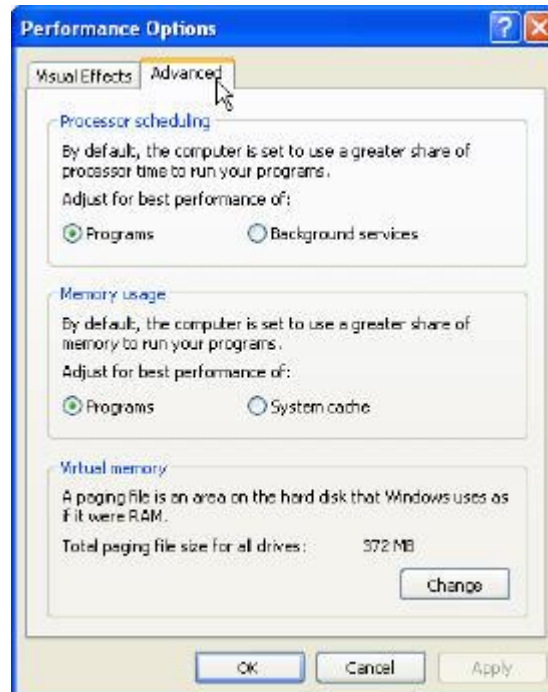


Optimizing Virtual Memory Windows XP

This window will appear.

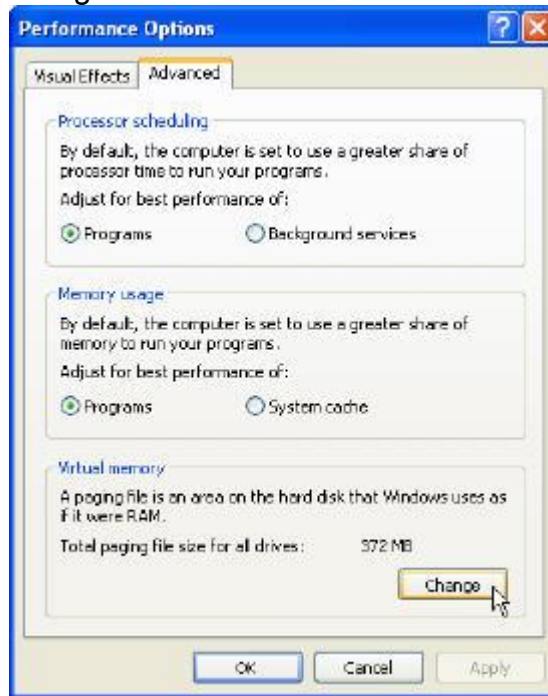


Click on the "Advanced" tab of this window.

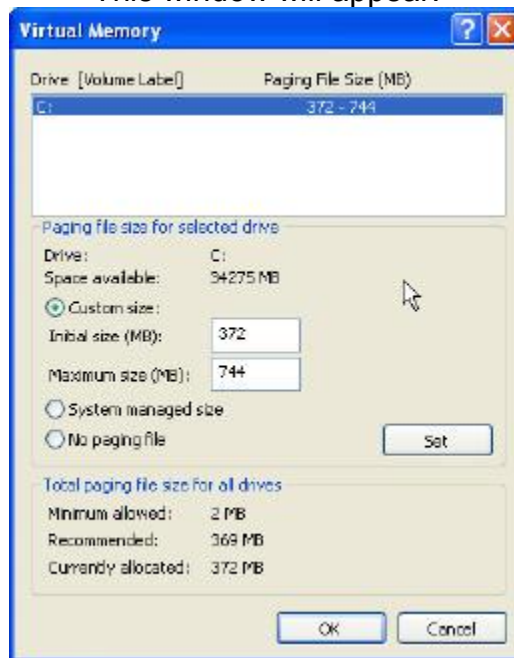


Optimizing Virtual Memory Windows XP

Click the “Change” button close to the bottom of this window.

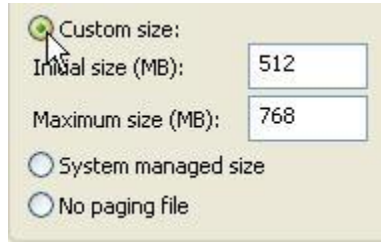


This window will appear.



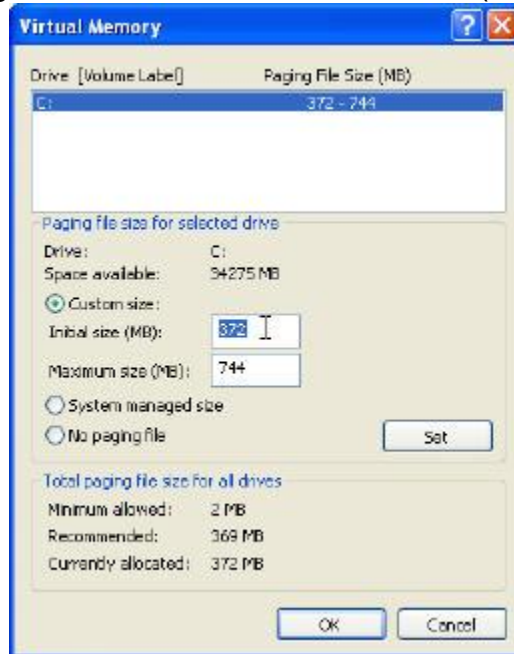
Optimizing Virtual Memory Windows XP

Make sure that “Custom size” is selected.



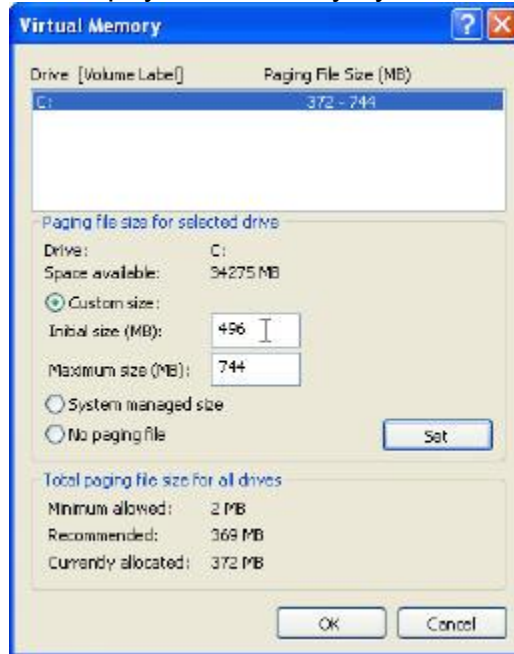
Now, you may need your calculator handy. Multiply the number you wrote down earlier (the amount of physical memory on your computer) by 2. This is the number we want to put in the “Initial size (MB)” box.

Highlight the numbers in the “Initial size (MB)” box.



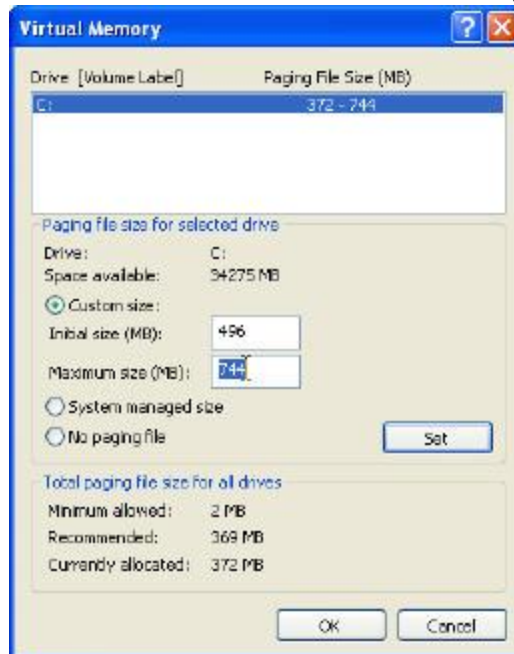
Optimizing Virtual Memory Windows XP

Change it to the number you came up with when you multiplied your computer's physical memory by 2.



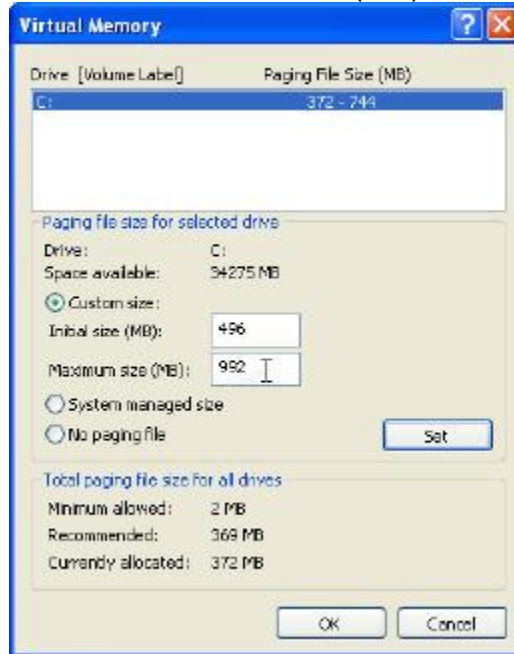
Now, multiply the number you just typed in as the "Initial size" by 2.

Highlight the numbers in the "Maximum size (MB)" box.

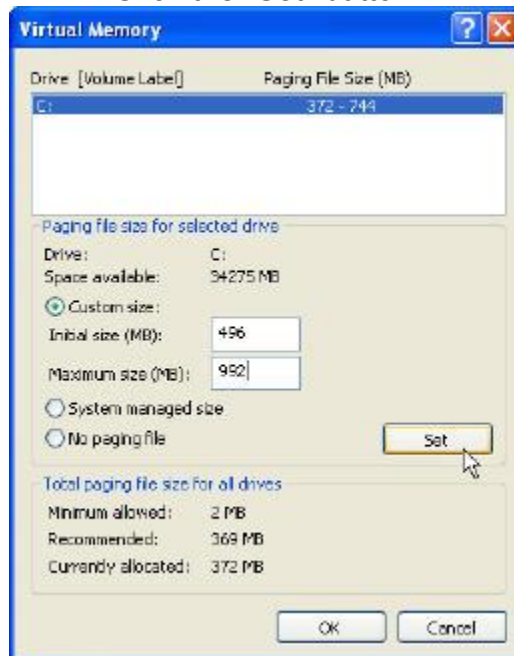


Optimizing Virtual Memory Windows XP

Enter the number you got from multiplying the “Initial size” by 2 in the “Maximum size (MB)” box.

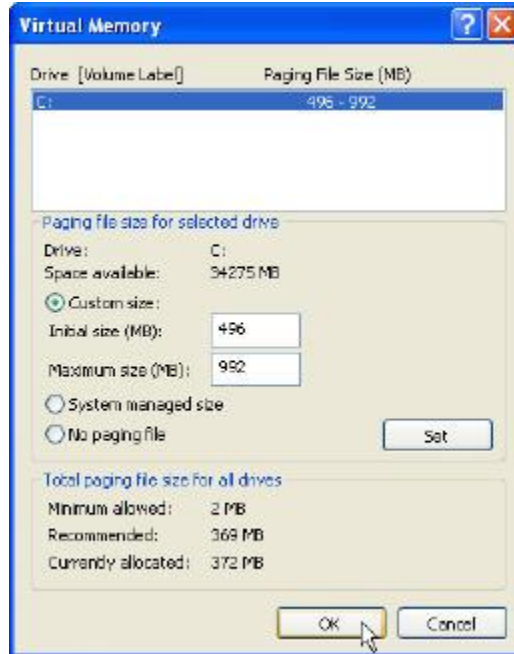


Click the “Set” button.



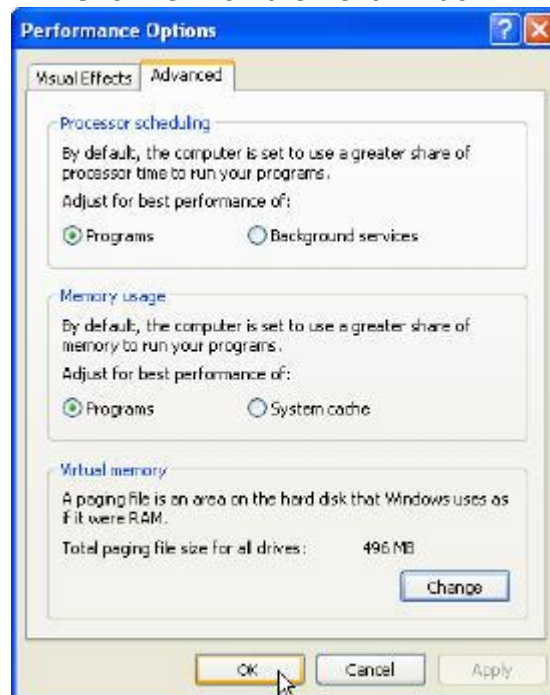
Optimizing Virtual Memory Windows XP

Click "Ok"



This window closes.

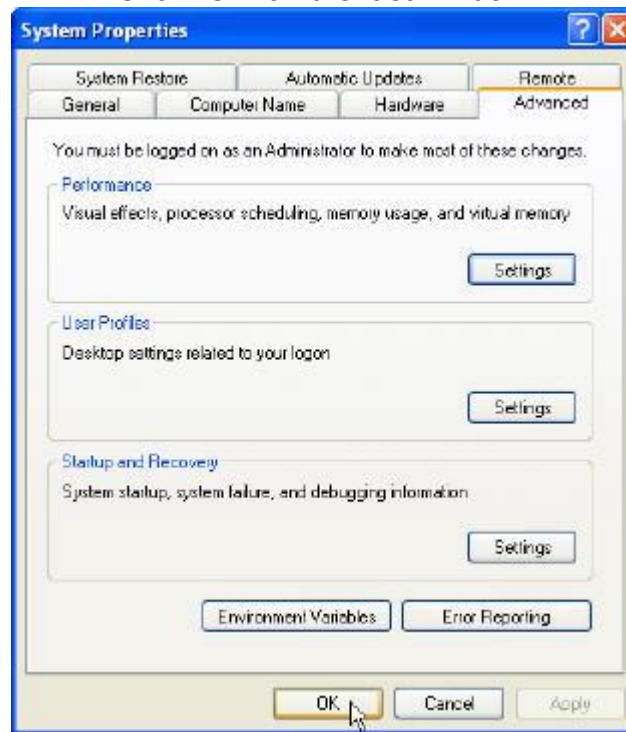
Click "Ok" on the next window.



This window closes.

Optimizing Virtual Memory Windows XP

Click "Ok" on the last window.



This window closes.

THE END