

Temporarily Turning Off Screen Saver And Adjusting Power Management Options

This document is a prerequisite to defragmenting your hard disk drive.

Right-click on the background of the desktop.



Click "Properties"

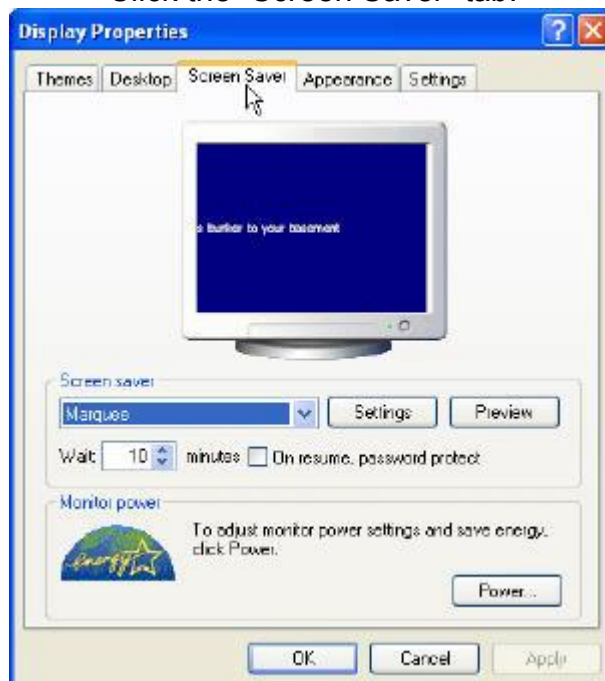


Temporarily Turning Off Screen Saver And Adjusting Power Management Options

This window will appear.

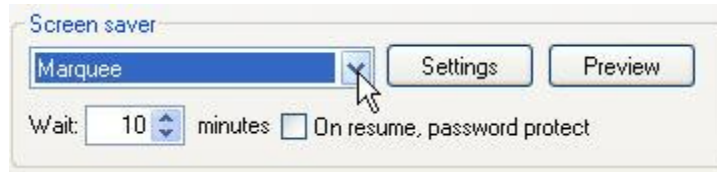


Click the "Screen Saver" tab.



Temporarily Turning Off Screen Saver And Adjusting Power Management Options

Click the down arrow under “Screensaver”



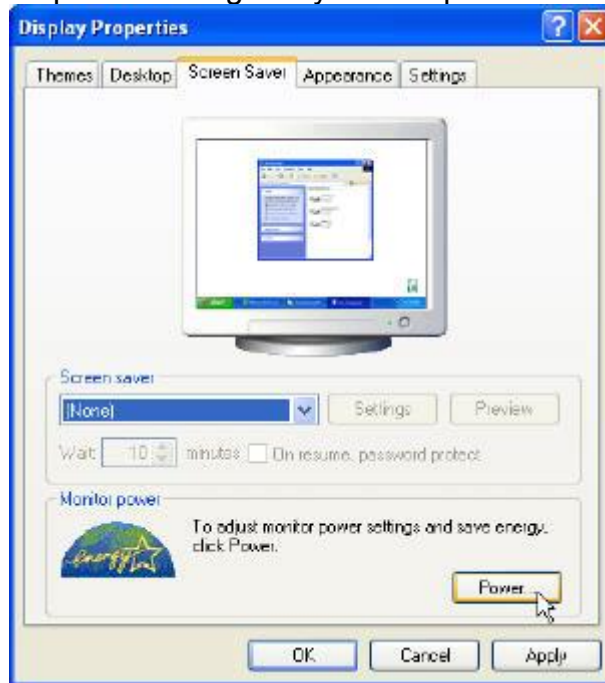
Click “None”



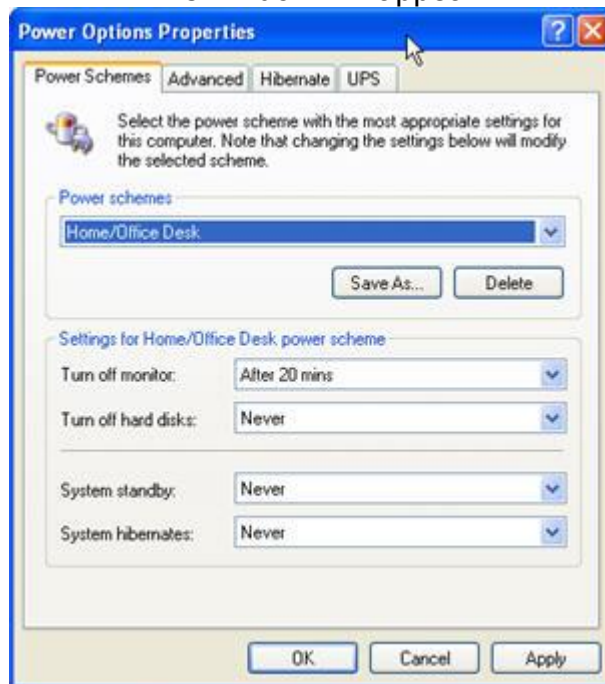
If you are about to defragment your hard drive, then you may need to adjust the power management settings. If you are not about to defragment your hard drive you may skip the rest of this tutorial.

Temporarily Turning Off Screen Saver And Adjusting Power Management Options

To change the power settings on your computer click on “Power...”



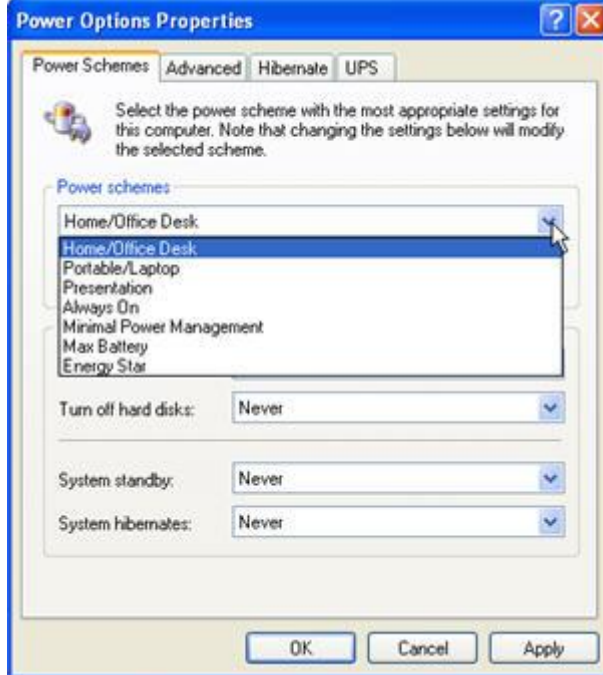
This window will appear.



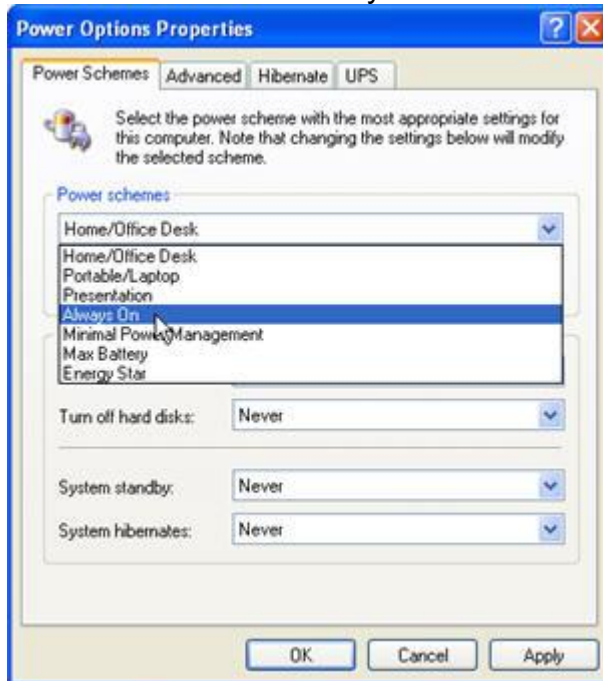
You may wish to write down these settings if you wish to change them back after you have finished defragmenting your disk.

Temporarily Turning Off Screen Saver And Adjusting Power Management Options

Under “Power schemes” click the down arrow.

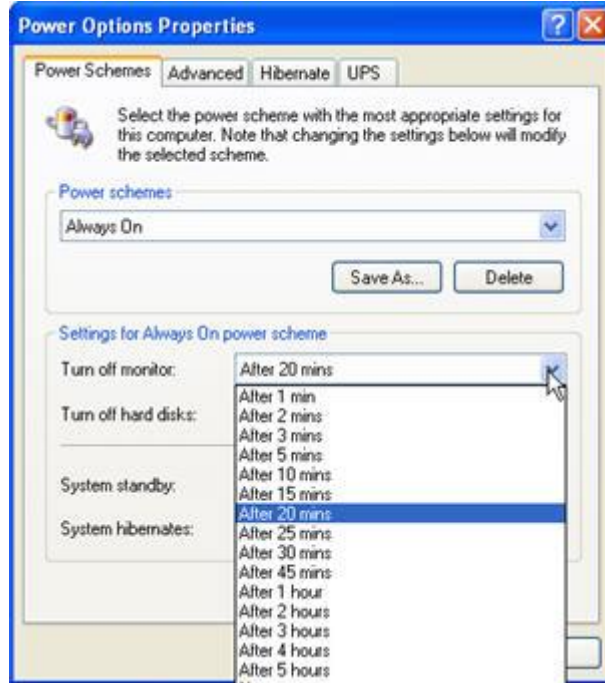


Click on “Always On”

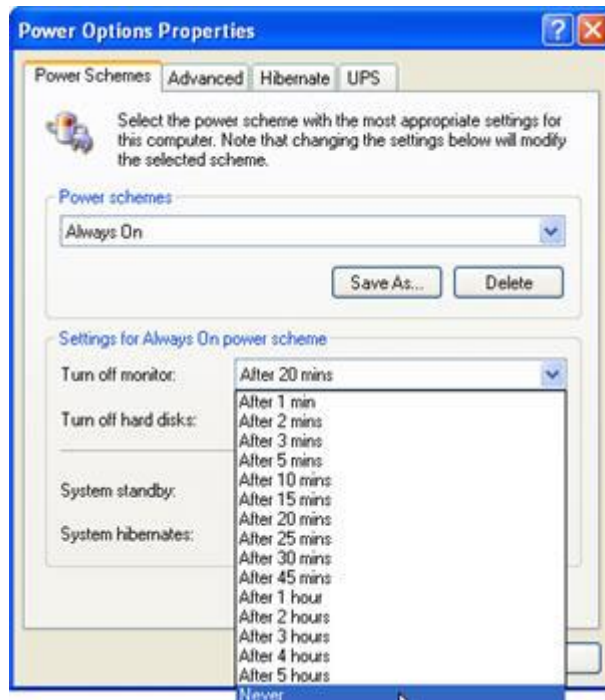


Temporarily Turning Off Screen Saver And Adjusting Power Management Options

Now, make sure all settings are set to “Never”.
If one or more is not set to “Never”, click the down arrow for that setting.

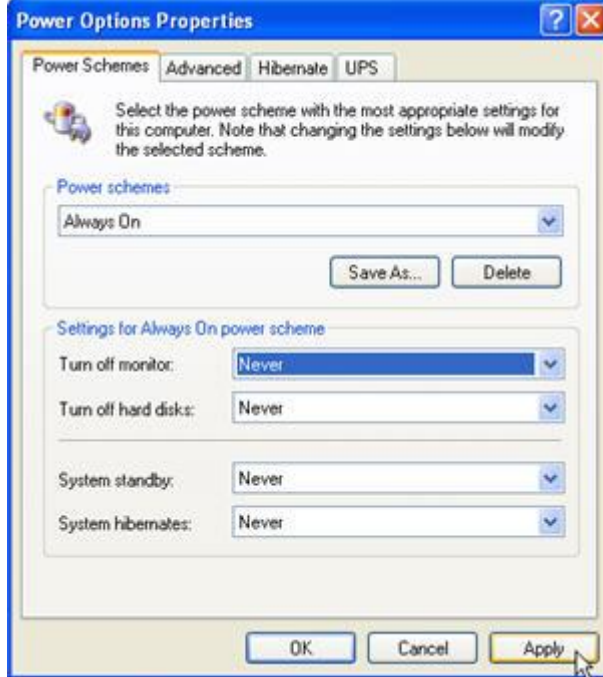


Click “Never”

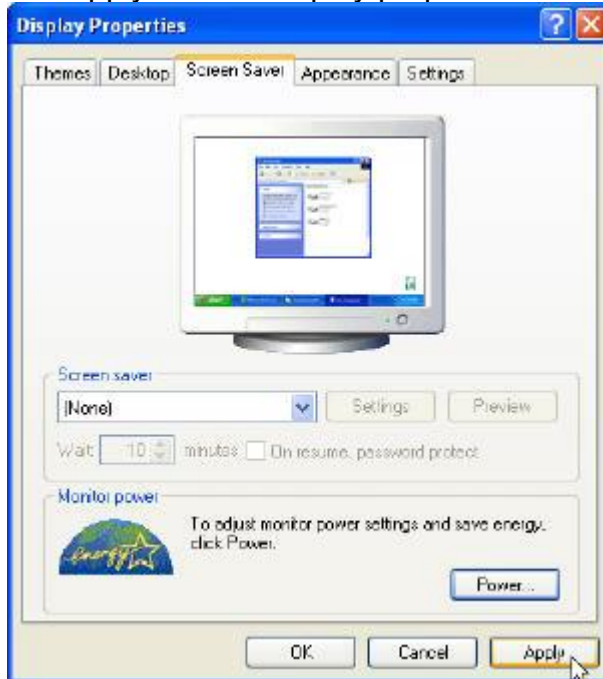


Temporarily Turning Off Screen Saver And Adjusting Power Management Options

When all settings are set to “Never”, click “Apply”

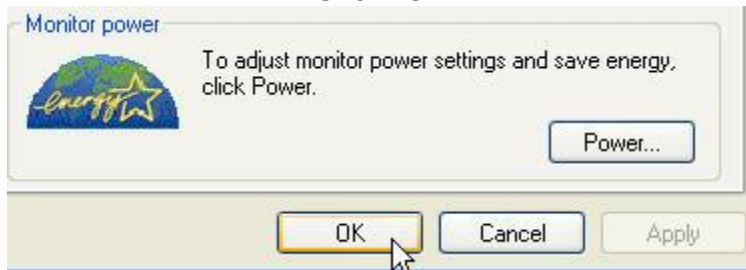


Click “Apply” on the Display properties window.



Temporarily Turning Off Screen Saver And Adjusting Power Management Options

Click "Ok"



THE END