

Chapter 10 Resetting the Administrator's Password

Aug 28, 2012

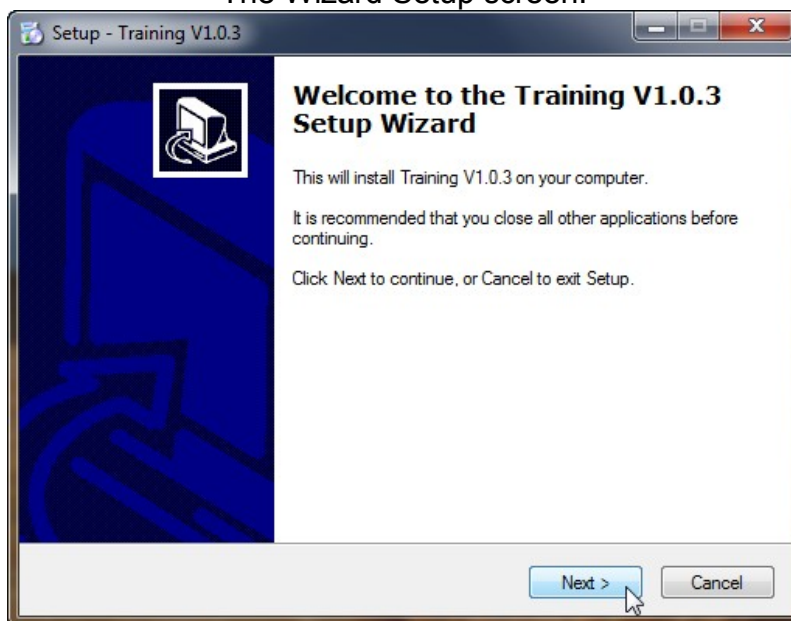
Version 1.0.3

Resetting the Admin Password

If the Administrator forgets his or her password, it will be necessary to reset the Administrator's Password back to the original (dryfire – in all lower case letters).

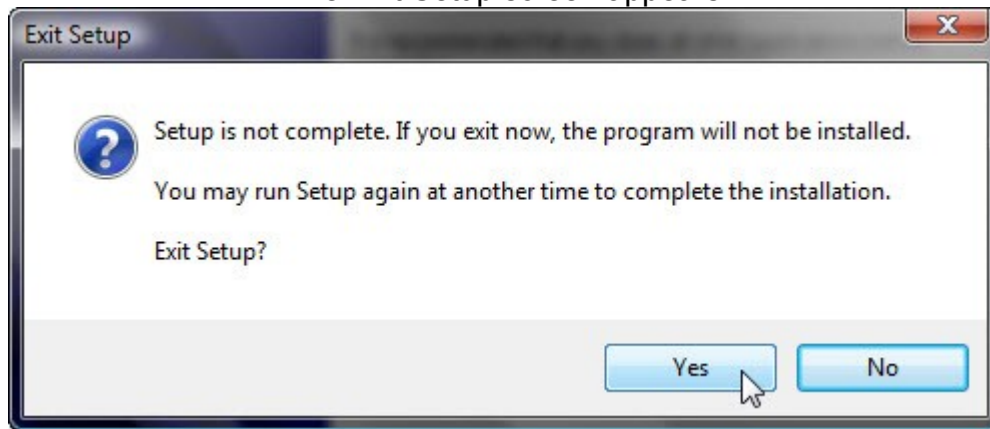
Insert your original Training Software Disk in your CD ROM. The CD ROM drive will spin up and soon the wizard screen shown below will appear. You really don't want to reload the program, but because you put a disk in the drive it will auto-start and the wizard screen will appear.

The Wizard Setup screen.



Click the "Cancel" button

The Exit Setup screen appears



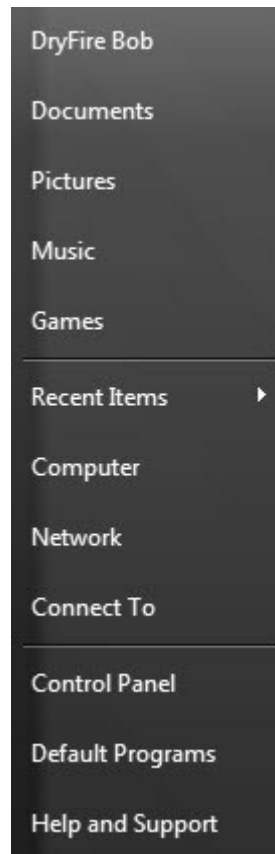
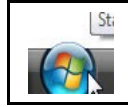
Click "Yes"

Chapter 10 Resetting the Administrator's Password

Aug 28, 2012

Version 1.0.3

On Windows 7 or Vista, click on the MicroSoft flag symbol.



Then click on "Computer"



On XP, click on the Start button.



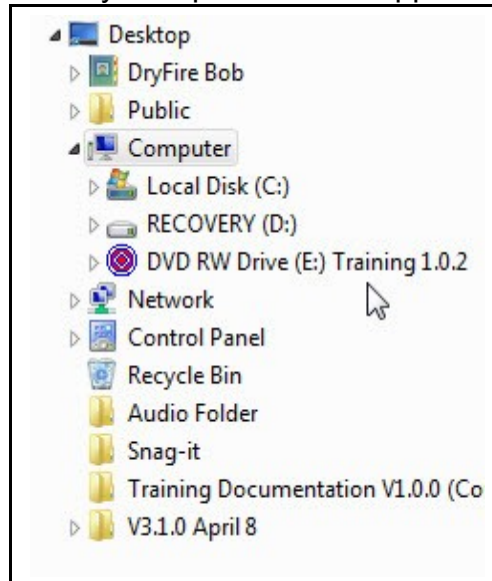
Then in the screen that opens, click on "My Computer."

Chapter 10 Resetting the Administrator's Password

Aug 28, 2012

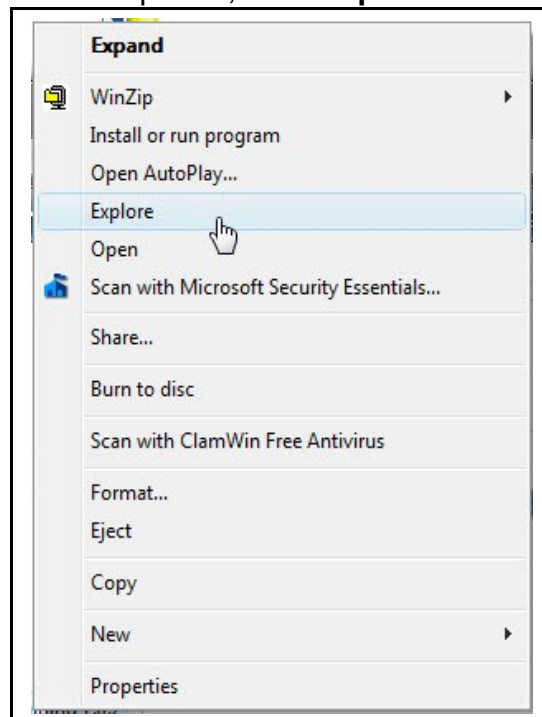
Version 1.0.3

The My Computer screen appears.



Find your CD ROM drive and right click.

In the list that opened, find “**Explore**” and left click.

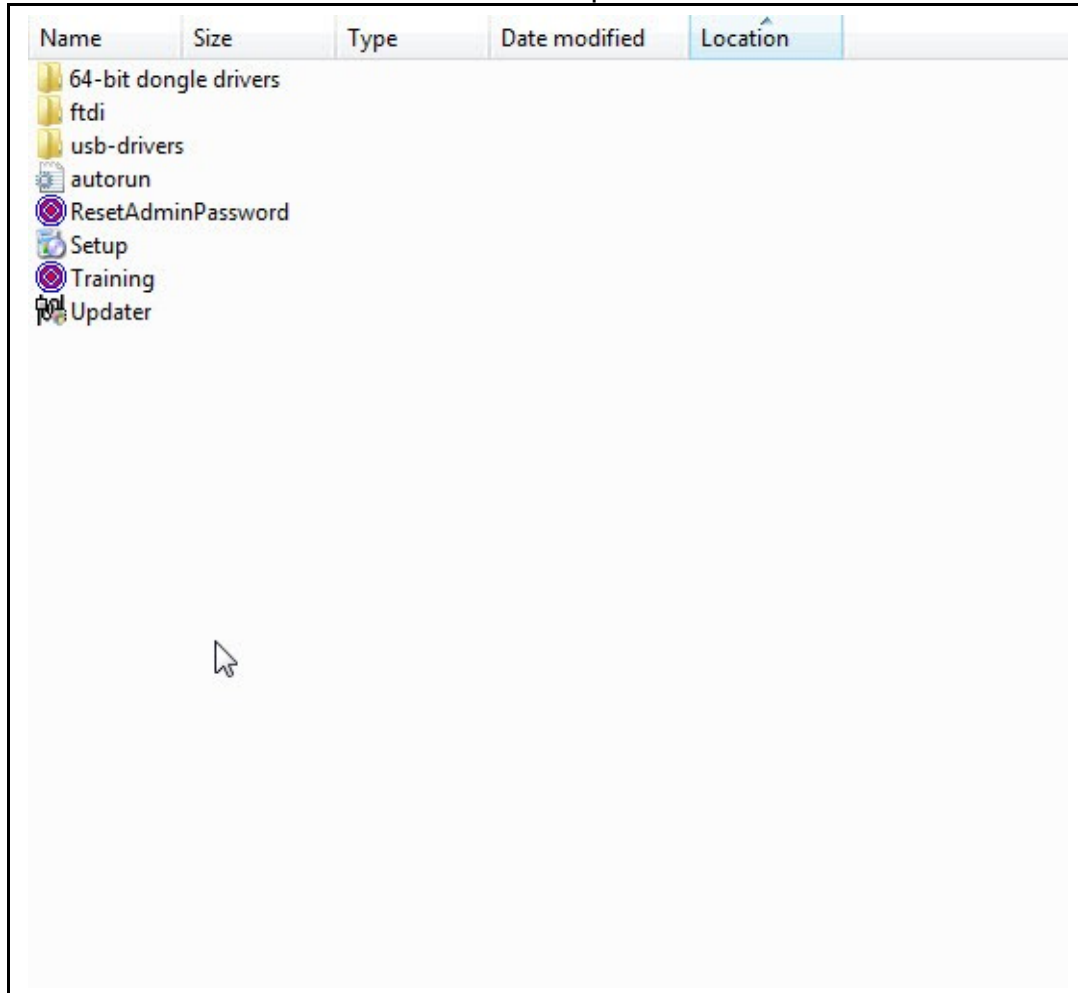


Chapter 10 Resetting the Administrator's Password

Aug 28, 2012

Version 1.0.3

The file list on the CD will open as shown below.



Double click on "ResetAdminPassword"

The Reset Administrator Password screen now opens as shown below.

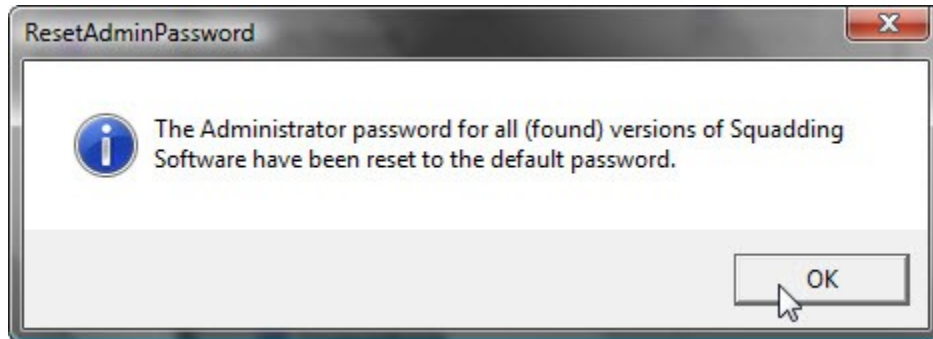


Enter the original password "dryfire" (all lower case letters) and click "OK"

Chapter 10 Resetting the Administrator's Password

Aug 28, 2012

Version 1.0.3



Click "OK"

Return to the desktop and double click on the Training Software Icon as the Administrator Password has now been returned to "dryfire"

The End